



LIFE IS FOR SHARING.

# Book your live SD-WAN demo!

Will upgrading your network give you a competitive edge?  
Treat yourself to a hands-on SD-WAN experience to find the answer.

Demand for **SD-WAN solutions** is spiking across industries, driven by cloud-based services, SaaS applications and the need to support remote workforces. If you're considering embarking on a network transformation journey but everything feels abstract and with the rapidly evolving technology you're unsure of what value you'll get out of it:

**You have landed in the right place!**

We can help clarify all your doubts through an in-depth live demo of **Telekom's cloud-based SD-WAN solutions**.

- **Exclusive access** to a complete **demo environment** provided in conjunction with our partner VMware
- Hosted by an **experienced Deutsche Telekom SD-WAN engineer** who will answer all questions
- **Live** at one of our UK offices or **virtual demo sessions**
- Now **free of charge** and with no further obligation

**Book your session: [sales\\_uk@telekom.com](mailto:sales_uk@telekom.com) / phone: +44 1908 651500**

# Fast-track your business strategy through a superior network experience

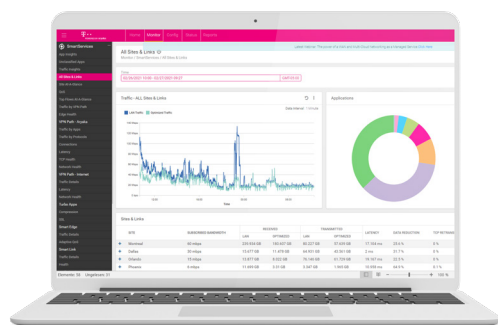
Within approx. 1.5 hours you'll find out how our SD-WAN solution can unlock your network's value and help your business strategy. Suitable for network architects, network administrators, infrastructure specialists, network support specialists and IT managers.

**It's a great opportunity not to be missed!**



We have use cases across three key domains:

|                          | Simplified WAN Management (Deploy – Configure – Monitor)  | Assured Application Performance  | Highly flexible Cloud and Service Insertion capabilities   |
|--------------------------|---|--|--|
| <b>Customer Benefits</b> | <ul style="list-style-type: none"> <li>Fast-track branch deployments and accelerate M&amp;A's</li> <li>Single interface to view, configure, and administer your estate</li> <li>Gain deep insight into your core business applications usage and user experience</li> </ul> | <ul style="list-style-type: none"> <li>Significantly improve and optimise the flexibility of your core corporate and home worker connectivity</li> <li>Prioritise critical business applications, or offload less critical services dynamically across your entire estate</li> </ul> | <ul style="list-style-type: none"> <li>Enable migration to the Cloud whilst extending end-to-end application performance to the Cloud edge</li> <li>Protect your domain using market leading security features including virus/malware protection, DLP, and Sandbox</li> </ul> |
| <b>Use cases</b>         | <ul style="list-style-type: none"> <li>Rapid zero touch deployment, installation, and activation of services</li> <li>Network orchestration</li> <li>Detailed reporting and at-a-glance dashboard</li> </ul>  | <ul style="list-style-type: none"> <li>Use of public internet services for business grade connectivity</li> <li>Realtime end-to-end business application optimisation</li> </ul>   | <ul style="list-style-type: none"> <li>Seamless Cloud integration and deployment using Gateway or vEdge install in Cloud Provider</li> <li>Simple Cloud Service Insertion</li> </ul>   |



At the end of the session you'll be able to assess how easily and effectively Deutsche Telekom Global Business and SD-WAN can support you on your journey towards a flexible consumption based network.

More information and booking details:

[www.business.telekom.com/sd-wan-lab-uk](http://www.business.telekom.com/sd-wan-lab-uk)

## CONTACT

Deutsche Telekom Global Business Solutions UK Ltd.  
Building K2, Timbold Drive, Kents Hill  
Milton Keynes, MK7 6BZ  
Great Britain

